

SFHN Influenza Vaccination Taskforce



Ellen Chen, MD

Ambulatory Care Director of Population Health and Quality

Jaime Martin, MPH

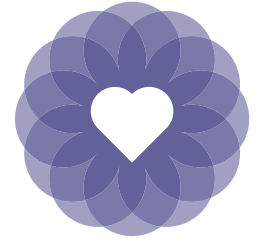
Manager, Value-based care



San Francisco
Health Network

SAN FRANCISCO DEPARTMENT OF PUBLIC HEALTH

SFHN Goals 2020-21



Offer vaccination to everyone touched by SFHN services during telehealth and (limited) in-person visits, during a time of reduced staffing

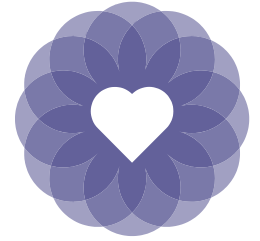
Support community vaccination in neighborhoods with less access to vaccines, especially the Southeast corridor and the Mission



Taskforce Objectives

- Support a coordinated response for the 20-21 Flu vaccination season
- Disseminate info and guidance for vaccination operations during the COVID 19 pandemic
- Support all services that see patients and clients to vaccinate (including non-traditional sites, such as behavioral health, home services, etc)
- Collaborate with SFDPH to create infrastructure that could later support COVID vaccination

Taskforce participation



Laguna Honda

ZSFG

Primary Care

Jail Health
Services

TB (PHD) Clinic

Occupational
Health

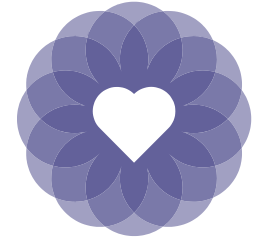
MCAH

Whole Person
Integrated
Care

Health at
Home

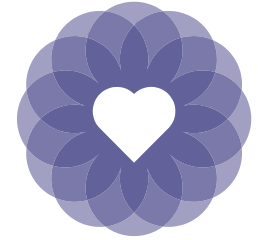
Behavioral
Health

Taskforce Implementation



- Infrastructure support work around **inventory** tracking and distribution
- **Documentation and reporting** in Epic and CAIR
- **Communications** website and promotional materials
- **QI** metric development and support to overcome operational barriers
- My Chart/Text **outreach** starting in November

Staff vaccination efforts



- **ZSFG Occupational Health**
 - Identified Flu Vaccine Champions
 - Launched online flu vaccine consent form, used QR tracking
 - 77.5% compliance rate as of mid-October
- **Laguna Honda Hospital**
 - Paired staff vaccination with weekly COVID testing
 - 76% staff vaccination rate mid-Oct
- **SFHHS**
 - Added DPH flu clinic at 25 Van Ness
 - JHS staff dedicated clinic for Sheriff's dept
- **BHS**
 - 1380 Howard

ZSFG Employee Flu
Attestation/Consent/Declination Form 2020

For employees who work on ZSFG campus, including DPH, CCSF, and UCSF staff
Includes Attestation/Consent/Declination

Employees- Please make sure to hit SUBMIT to have your form registered and to receive a confirmation email.
Check your email for a receipt of completion, and present the email when you show up to receive your flu vaccine.



Schedule your appointment today!
Click [HERE](#) to get started or scan the QR code with your smartphone.

The following clinics are open to all active employees of the four employers (CCSF, USD, CCD, and CRT), retirees and spouses/domestic partners of retirees. Appointments are required in order to get a flu vaccination.



SFHN flu vaccinations during COVID

Primary Care, ZSFG, LHH

- All telehealth patients referred to flu clinics
- Streamlined Epic workflows
- Expanded access
 - Primary Care: Weekend flu clinics
 - ZSFG: Radiology and other diagnostic services
- 4 Pop up flu clinics at ATS sites:
 - ZSFG Carr (Mission)
 - Southeast Health Center (Bayview)
 - HopeSF (Sunnydale/Excelsior)
 - Maxine Hall (Western Addition)

**1083 Vaccinated at ATS's as of 10/28
(34% do not have SFHN Primary Care Home)**



San Francisco
Health Network

SAN FRANCISCO DEPARTMENT OF PUBLIC HEALTH

SFHN flu vaccinations during COVID

New Service Areas

- Engaged new service areas to target key vulnerable populations
 - WPIC with SIP sites
 - Community BHS including 1380 Howard
 - Health at Home
 - PHD TB clinic

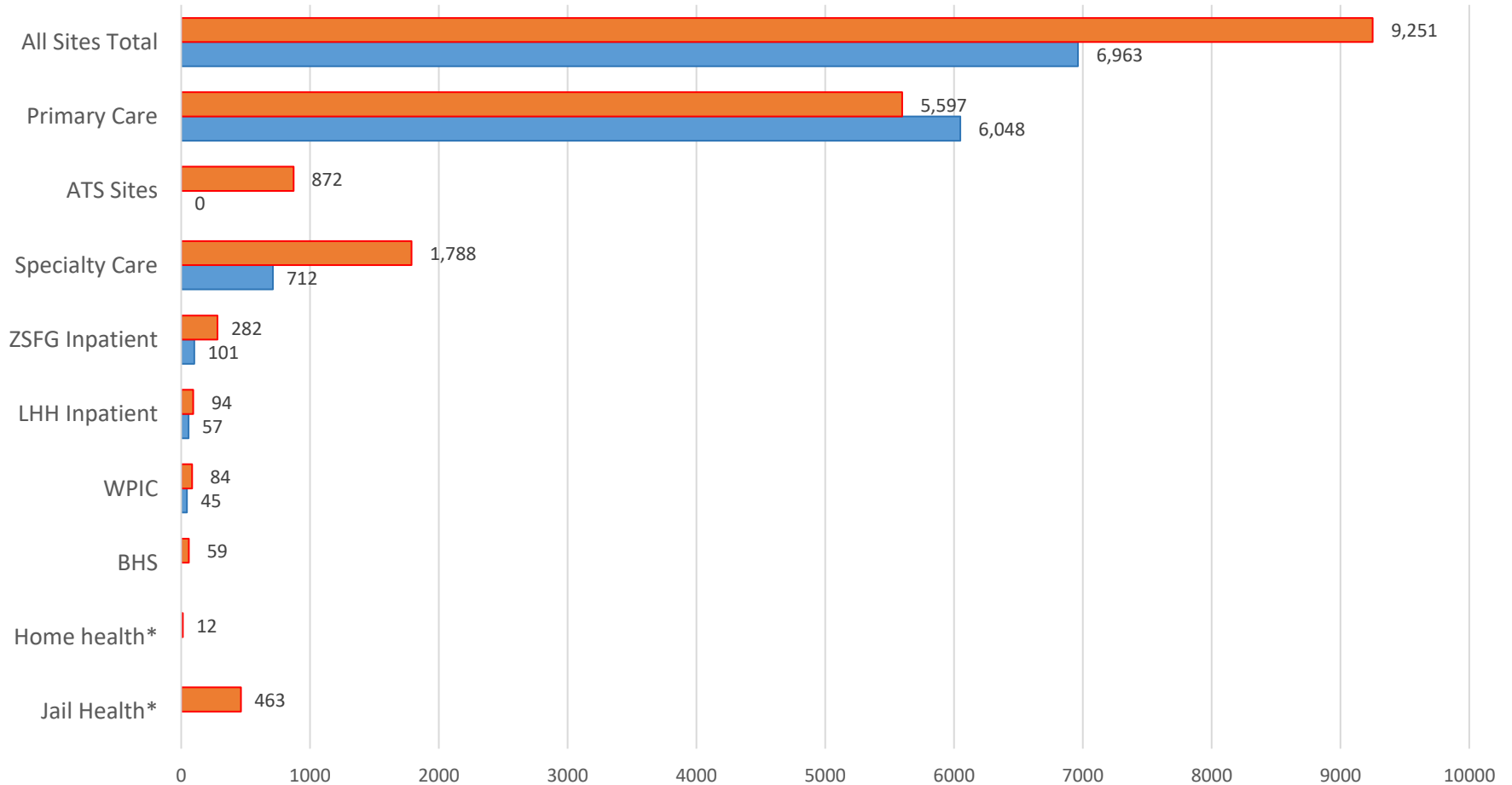


San Francisco
Health Network

Measuring vaccine campaign success

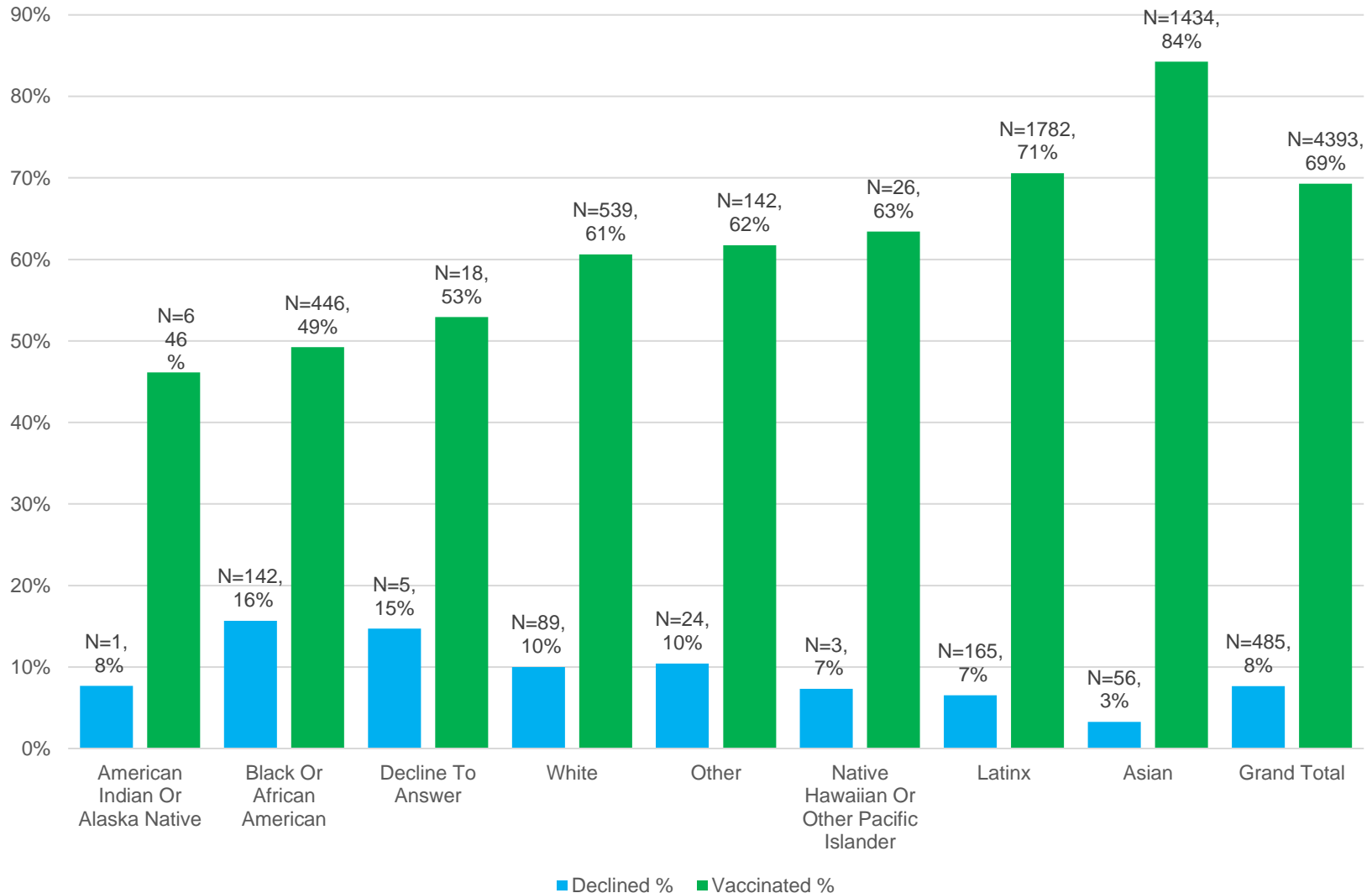
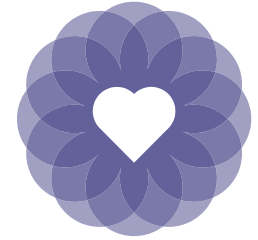
Number of Vaccines Administered - SFHN

Sept - Oct 26, 2020 Sept - Oct 26, 2019



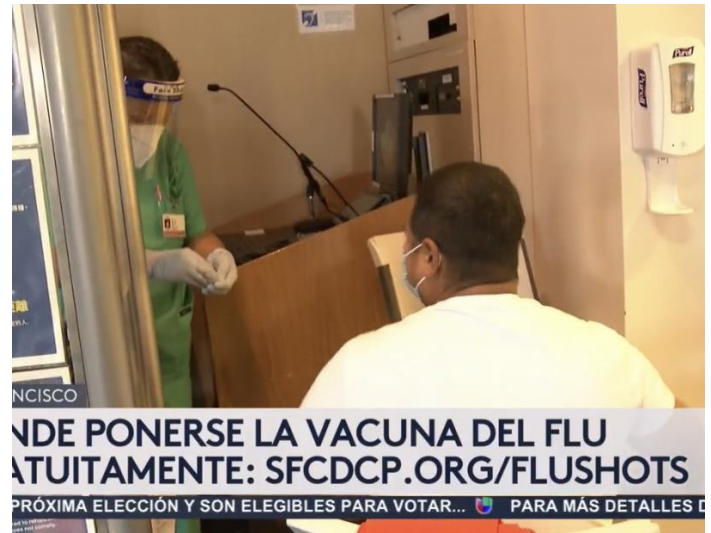
* 2019/20 Data not available

% of Influenza Vaccination and Declines among Primary Care In-person visits Oct 1-26th, 2020



Key successes and learning

- Pop-up sites kickoff and collaboration with CD/C3 team
- Coordination of flu vaccine inventory and storage to facilitate capacity planning
- OSH QR tracking for staff across SFHN needed
- Development and goal setting of key metrics, with a focus on health disparities
- Roles and personnel needed to coordinate future vaccination within SFHN



Acknowledgements



**Our flexible and persistent operational leaders across
Ambulatory Care**

**The CD and C3 teams who continue to strengthen
collaboration with SFHN, even as city-wide work grows.**

Taskforce leads

- **Jaime Martin**
- **Rachel Stern**
- **Susan Fisher-Owens**
- **Ellen Chen**